

Comet Ridge Limited

ASX: COI



Comet Ridge Limited

Good Oil Conference 2017

Tor McCaul
Managing Director

Perth, 14 September 2017

Important Notice and Disclaimer



Comet Ridge Limited

Disclaimer

This presentation (Presentation) has been prepared by Comet Ridge Limited (ABN 47 106 092 577) (Comet Ridge). The Presentation and information contained in it is being provided to shareholders and investors for information purposes only. Shareholders and investors should undertake their own evaluation of this information and otherwise contact their professional advisers in the event they wish to buy or sell shares. To the extent the information contains any projections, Comet Ridge has provided these projections based upon the information that has been provided to Comet Ridge. None of Comet Ridge or its directors, officers or employees make any representations (express or implied) as to the accuracy or otherwise of any information or opinions in the Presentation and (to the maximum extent permitted by law) no liability or responsibility is accepted by such persons.

Summary information

This Presentation contains summary information about Comet Ridge and its subsidiaries and their activities current as at the date of this Presentation. The information in this Presentation is of general background and does not purport to be complete. It should be read in conjunction with Comet Ridge's other periodic and continuous disclosure announcements lodged with the Australian Securities Exchange (ASX), which are available at www.asx.com.au.

ASX Releases

Investors are advised that by their nature as visual aids, presentations provide information in a summary form. The key information on detailed Resource statements can be found in Comet Ridge's ASX releases. Resource statements are provided to comply with ASX guidelines but investors are urged to read supporting information in full on the website.

Past performance

Past performance information given in this Presentation is given for illustrative purposes only and should not be relied upon as (and is not) an indication of future performance.

Future performance

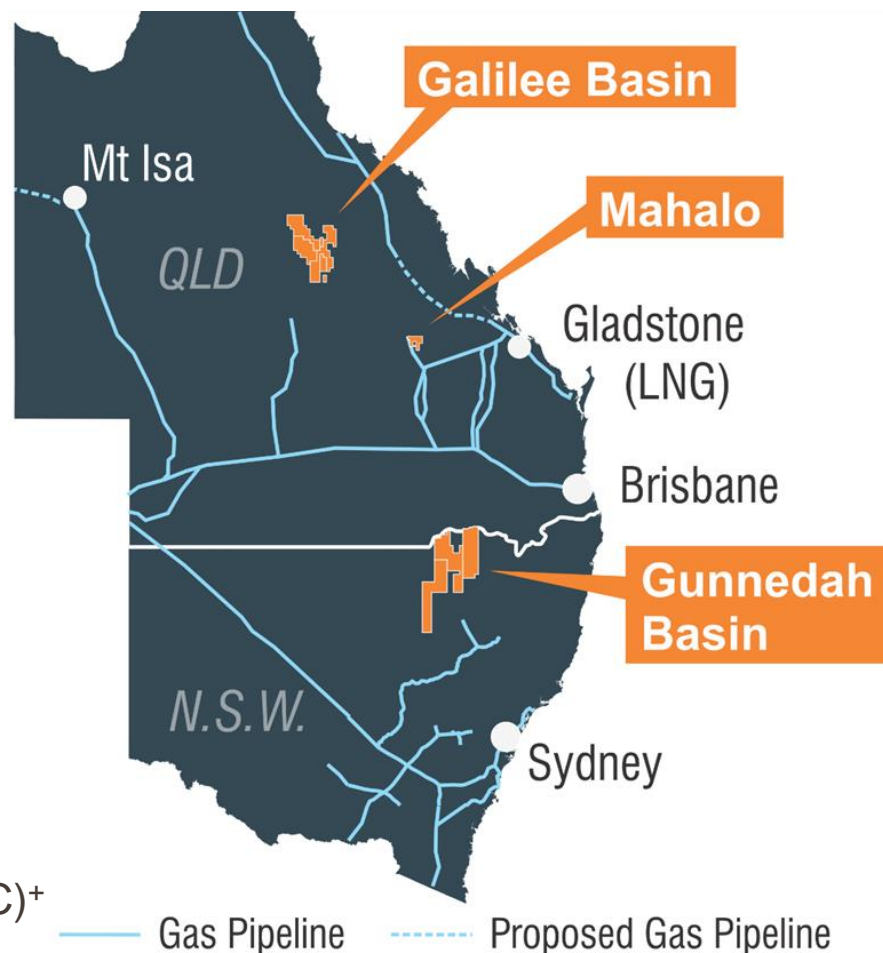
This Presentation contains certain "forward-looking statements". Forward looking words such as, "expect", "should", "could", "may", "plan", "will", "forecast", "estimate", "target" and other similar expressions are intended to identify forward-looking statements within the meaning of securities laws of applicable jurisdictions. Indications of, and guidance on, future earnings and financial position and performance are also forward-looking statements. Forward-looking statements, opinions and estimates provided in this Presentation are based on assumptions and contingencies which are subject to change without notice, as are statements about market and industry trends, which are based on interpretations of current market conditions. Such forward-looking statements, opinions and estimates are not guarantees of future performance.

Forward-looking statements including projections, guidance on future earnings and estimates are provided as a general guide only and should not be relied upon as an indication or guarantee of future performance. This presentation contains such statements that are subject to known and unknown risks and uncertainties and other factors, many of which are beyond the control of Comet Ridge, and may involve significant elements of subjective judgement and assumptions as to future events which may or may not be correct. It is believed that the expectations reflected in these statements are reasonable, but they may be affected by a range of variables which could cause actual results or trends to differ materially, including but not limited to: price fluctuations, actual demand, currency fluctuations, drilling and production results, reserve estimates, loss of market, industry competition, environmental risks, physical risks, legislative, fiscal and regulatory developments, economic and financial market conditions in various countries and regions, political risks, project delay or advancement, approvals and cost estimates. Such forward-looking statements are relevant at the date of this Presentation and Comet Ridge assumes no obligation to update such information.

Investment risk

An investment in Comet Ridge shares is subject to investment and other known and unknown risks, some of which are beyond the control of Comet Ridge. Comet Ridge does not guarantee any particular rate of return or the performance of Comet Ridge. Persons should have regard to the risks outlined in this Presentation.

- **ASX listed - based in Brisbane**
- **Focus on natural gas in eastern Australia**
- **Very large blocks & multi-basin presence:**
 - ✓ Galilee – Queensland
 - Significant resource base northwest of Gladstone (over 2200 PJ 3C)+
 - ✓ Southern Bowen (Mahalo) – Queensland
 - Coal Seam Gas (CSG) pilot schemes running with initial 2P and 3P reserves
 - ✓ Gunnedah – NSW
 - Resources strategically located to meet NSW gas requirements (over 560 PJ 3C)+

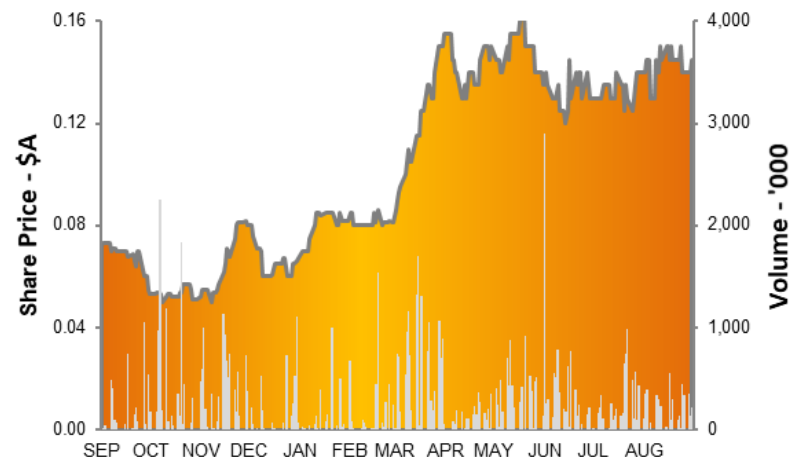


Corporate Overview

Capital Structure – ASX: COI

Share price (13 September 2017)	\$0.145
Shares on issue	617.7m
Performance rights	5.0m
Diluted market cap	\$90.3m
Cash (30 June 2017)	\$6.0m

12 Month Share Price Performance



James McKay
Non-Exec Chairman

- 28 years in business (commerce/law background)
- Former Chairman, Sunshine Gas



Chris Pieters
Commercial Director

- Geologist with 12 years in oil & gas
- Former Chief Commercial Officer, Sunshine Gas



Tor McCaul
Managing Director

- Petroleum engineer with 29 years in oil & gas
- Former Head of Commercial for Cairn plc in India



Mike Dart
Non-Exec Director

- 20 years experience in M&A and Finance
- Director of Dart Capital Partners, private venture capital fund



Gillian Swaby
Non-Exec Director

- 30+ years in Finance & Resources
- Former Chair of WA Council of Chartered Sec.

Eastern Australia – More Gas Required



Comet Ridge Limited

- Substantial green activism against gas despite the significant contribution gas makes to industry & the national economy
- Some (MOST) states and territories – limiting gas supply as demand increases dramatically !
- Queensland and South Australia have been blessed with gas common sense
- Additional gas supply is the only effective and rational response

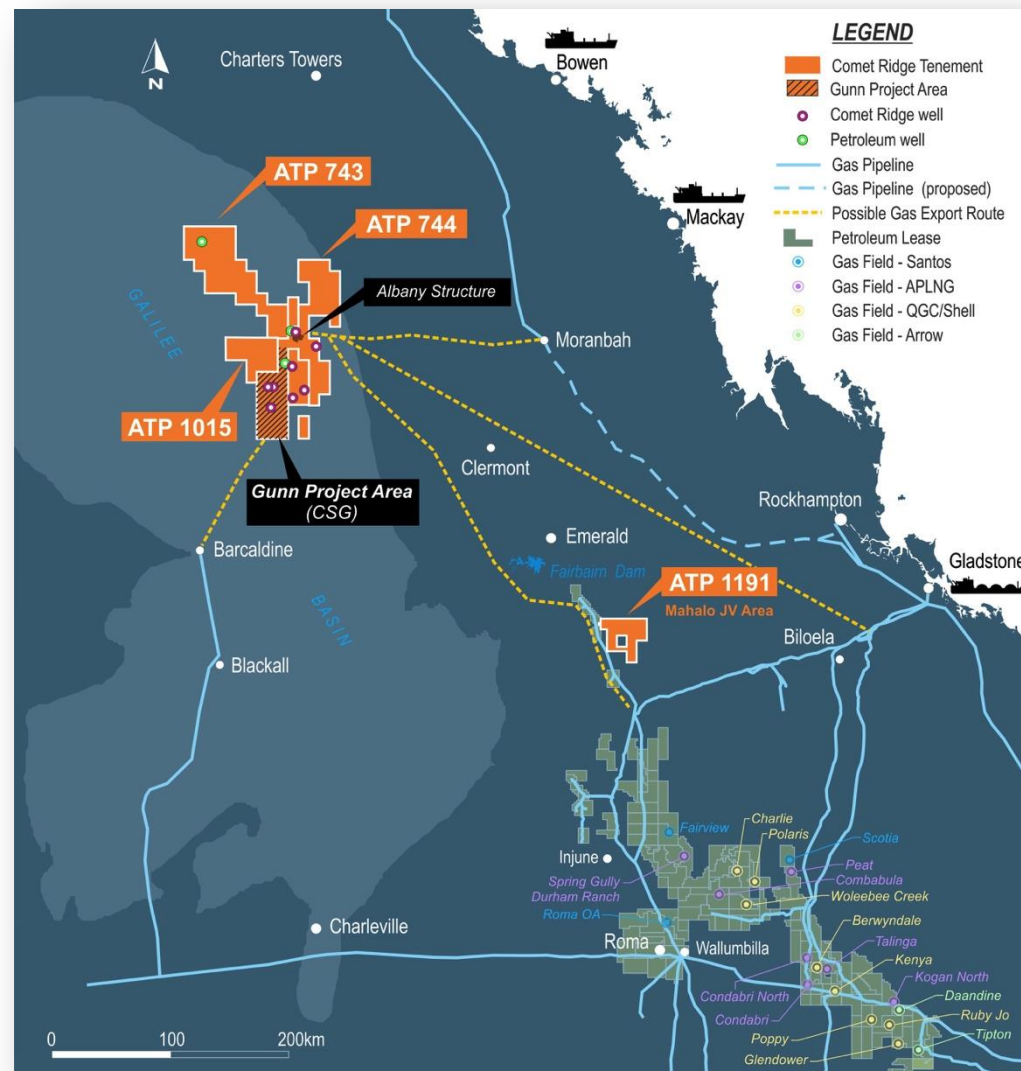


Comet Ridge – Supply Solutions



Comet Ridge Limited

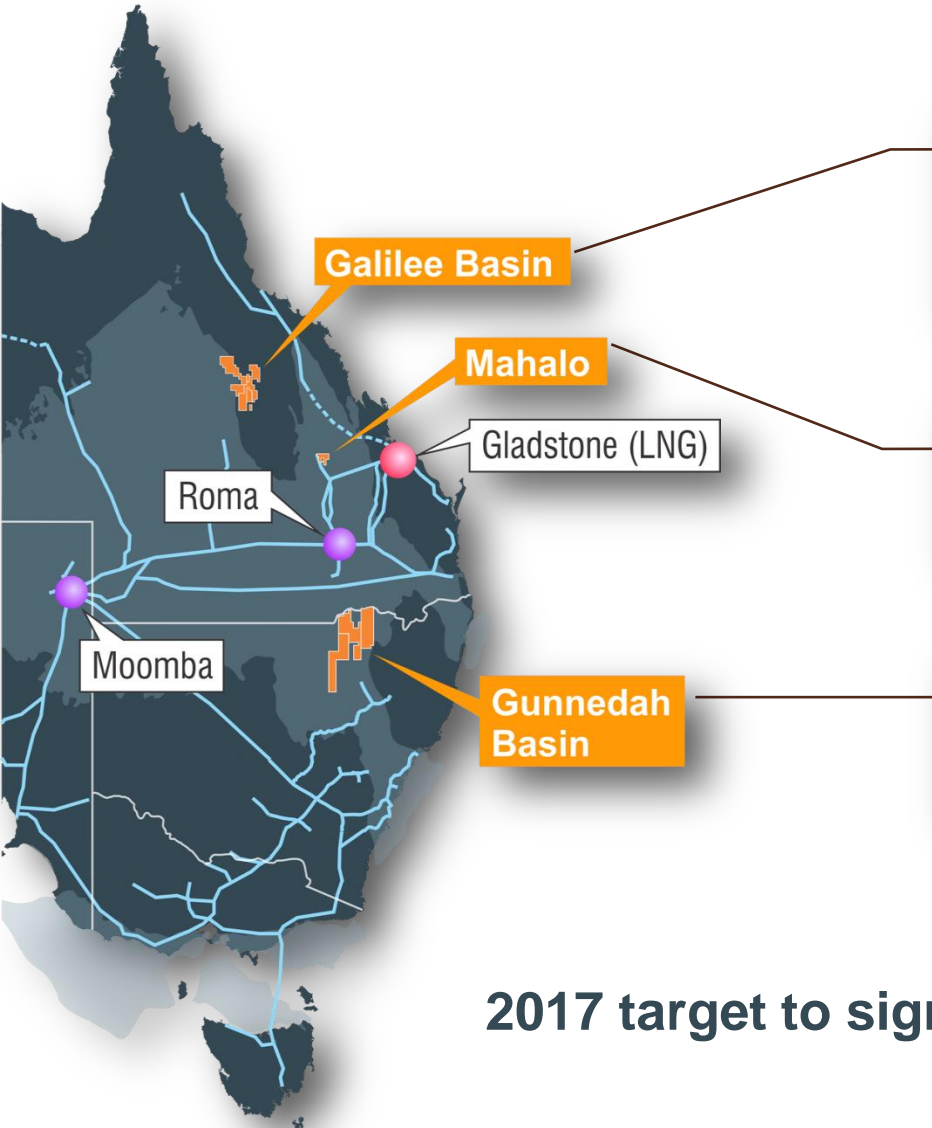
- Comet Ridge assets can form part of the supply solution for eastern gas market
- Near term – Mahalo:
 - Complete current programme to substantially increase 2P reserves base
 - Develop asset with JV partners (Santos 30% & APLNG 30%)
- Medium term – Galilee:
 - Substantial resources - 2,200 PJ 3C⁺ across coals & sandstones
 - Substantial scale - 9,700 km²
 - 100% equity position allowing farm-down options
- Longer term – Gunnedah:
 - Assets cover 17,000 km² & are located north of Santos' Narrabri development
 - Longer term hold-then-follow strategy



Comet Ridge - Strategic East Coast Gas Portfolio



Comet Ridge Limited



Type	+Reserve (PJ)		+Contingent Resource (PJ)		
	2P	3P	1C	2C	3C
CSG				67	1870
Albany Structure			56	153	417

Type	+Reserve (PJ)		+Contingent Resource (PJ)		
	2P	3P	1C	2C	3C
CSG	30	219	112	232	372

Type	+Reserve (PJ)		+Contingent Resource (PJ)		
	2P	3P	1C	2C	3C
CSG					562

2017 target to significantly grow Mahalo 2P reserves

Mahalo Project



Mahalo Production Performance



Comet Ridge Limited

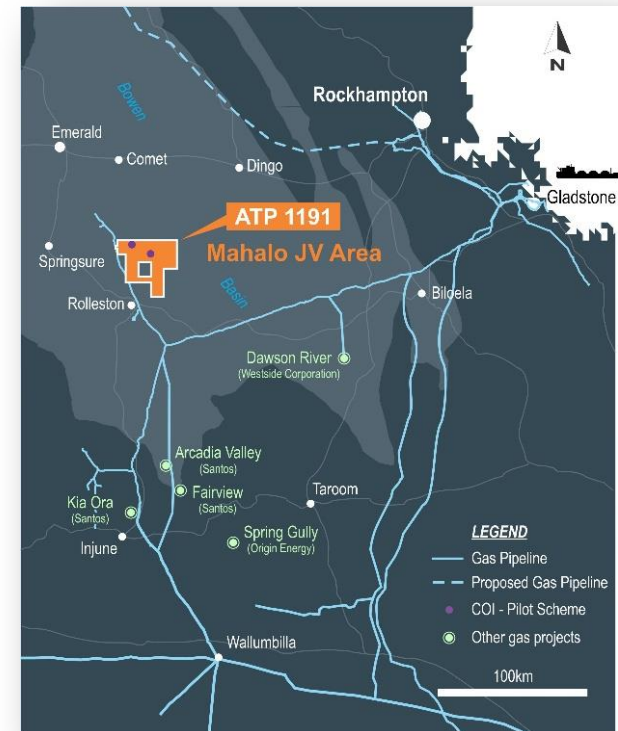
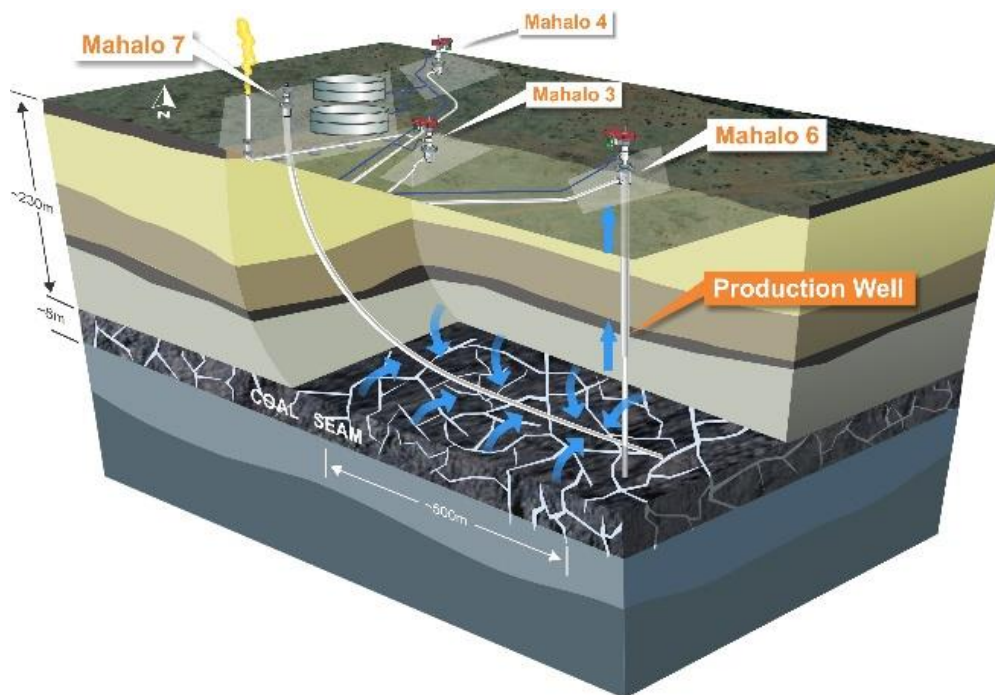
JV Equity:

Comet Ridge 40%

Santos 30%

APLNG 30%

- Overall performance of horizontal well and Mahalo Pilot has been very pleasing
- Scale up of short Mahalo 7 horizontal well to longer development wells is logical and achievable
- Gas flowrate 426 mcf/d from horizontal with only 361 metres in coal

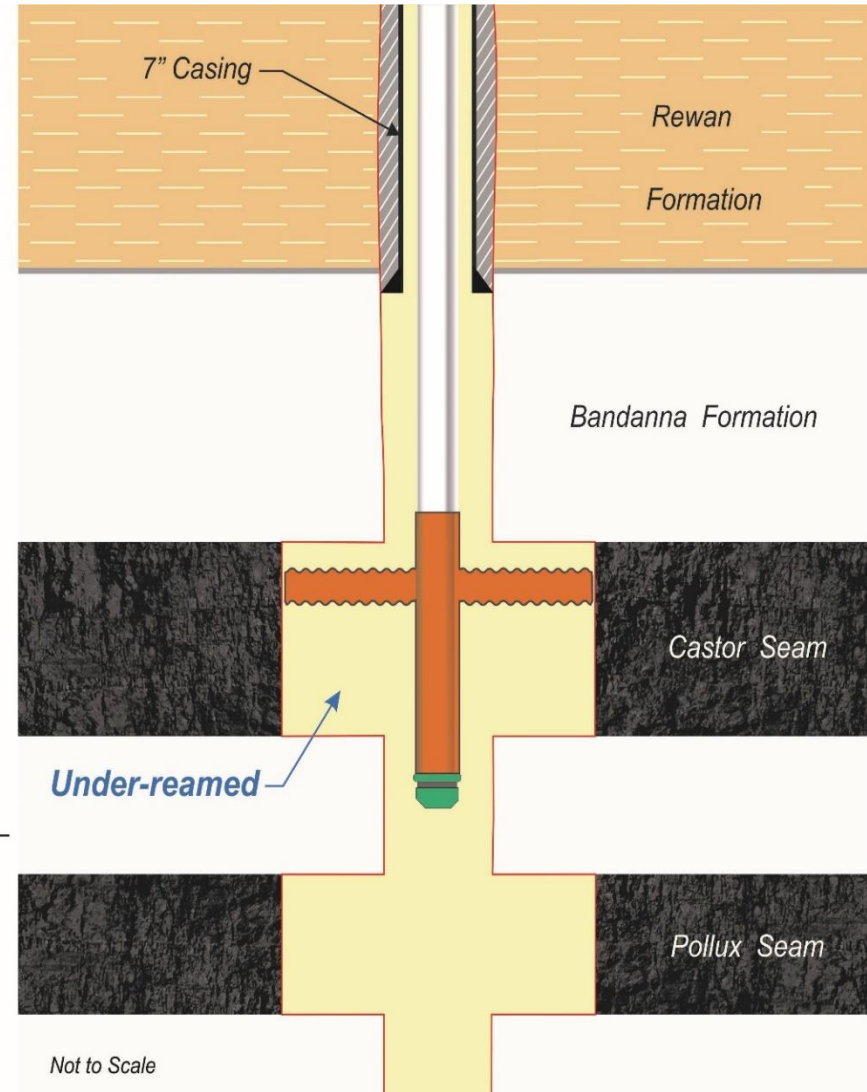


Mira Production Performance – Mira 3, 4 & 5



Comet Ridge Limited

- Well production enhancement process
- Coal (fractures plugged by fines) is removed from around wellbore
- Provides easier pathway for gas and water to flow to well
- Drilling tool run inside casing with expandable arms
- Tool placed across coals and rotated at high speed
- Water pumped down inside of drillpipe carries coal material back to surface outside of drillpipe and inside of casing
- Production tubing and downhole pump then run back into the well and well returned to production
- Wells on line late August - already producing minor gas with flare intermittently lit



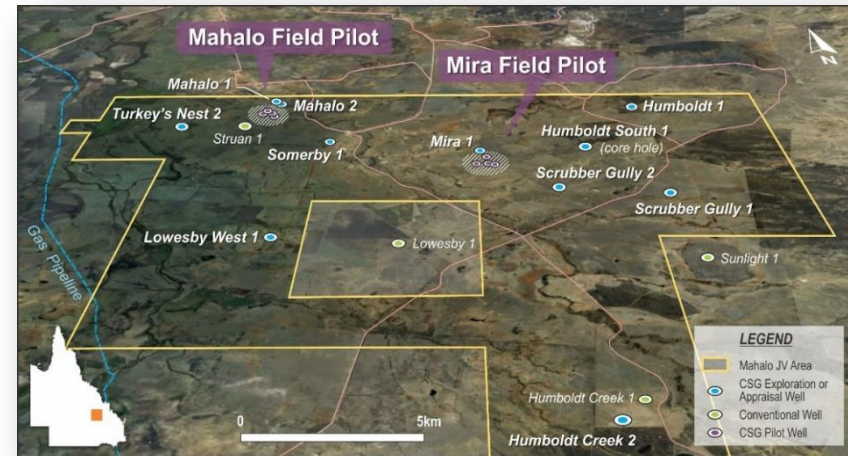
Mahalo – Comet Ridge Managing Subsurface Work



Comet Ridge Limited

Target – move significant volume of 219 PJ 3P+ across to 2P this year

- March - Executed agency agreement for Comet Ridge to manage subsurface ✓
- April - Work Program and Budget approved by Santos and APLNG ✓
- August - Field work commenced ✓
- Program focused in north of block:
 - Mira 3, 4 & 5 successfully under-reamed ✓
 - Humboldt South 1 corehole drilled – good results ✓
 - Mira 6 Horizontal well – spud October



Full work programme to be completed for under \$5m gross JV spend – currently on track

Mahalo Development Concept



Comet Ridge Limited

Significant analysis work completed – examining the most efficient and effective way to move the northern pilot schemes into production via available export pipeline capacity and field infrastructure

Three Step Process:

1. Conversion of existing 3P to 2P reserve

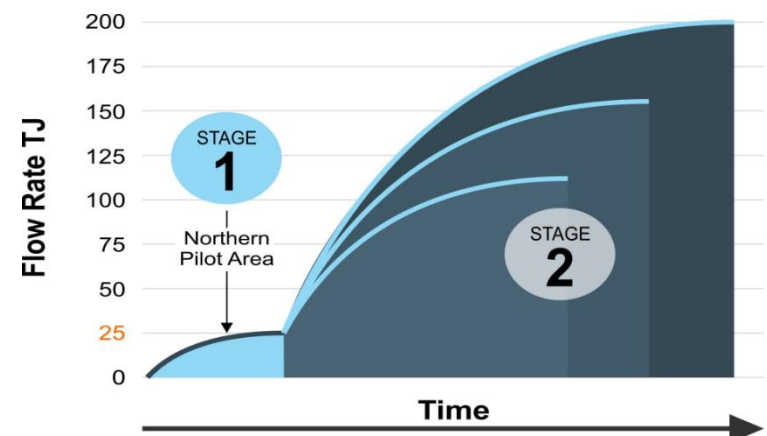
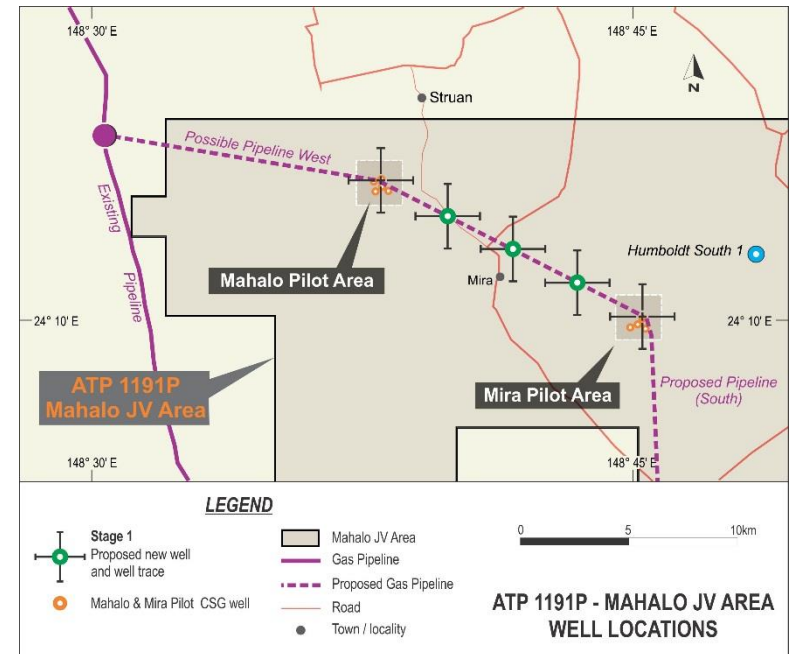
- Production enhancement at Mira Pilot
- Single step-out corehole in north east

2. Initial production phase targeting 25 TJ/d from northern part of the block

- Utilise existing facilities to minimise capex spend and construction time

3. Expand initial production phase to full field target of 100+TJ/d

- Based around well production rates from initial production phase to guide field development



The Right Ingredients For Development



Comet Ridge Limited

- ✓ **Shallow**
 - ❑ Mahalo Pilot only 225 metres to coal
 - ❑ Lower drilling and completion costs
- ✓ **Permeable**
 - ❑ Mahalo 7 flowed 1.2 mcf/d gas per metre of coal intersected along horizontal well
 - ❑ Higher flowrates / less wells
- ✓ **Low water rates**
 - ❑ Mahalo 7 peaked at only 30 bwpd so exceptionally low water-gas ratio
 - ❑ Lower water handling capex and opex / less workovers
- ✓ **Gas Quality**
 - ❑ No expensive CO₂ or H₂S removal to get to sales gas spec
 - ❑ Use basic carbon steel in wells, flowlines and plant
- ✓ **Close to infrastructure**
 - ❑ 14 km - nearest pipeline connection
 - ❑ 60 km - Mira Pilot to Jemena pipeline
 - ❑ 63 km - Mira Pilot to GLNG pipeline



These key parameters will place Mahalo at the low end of the cost curve

Galilee Basin

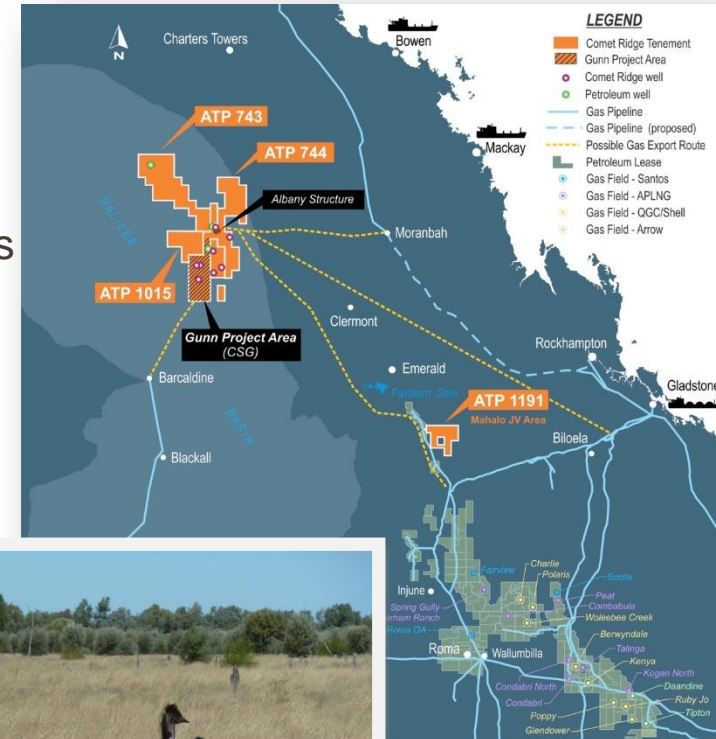


Galilee Basin – Significant Scale



Comet Ridge Limited

- Basin covers a large part of central western Queensland (~250,000km²)
- Comet has a massive position in the east at 100%
- Land use is grazing on very large stations
- Historic oil exploration (1964 & 1995) includes gas flows from Sandstones at 2800 metres
- Comet has a dual sandstone and CSG opportunity
- Significant 3C resources certified in both
- Planned Galilee coal mine just to the east



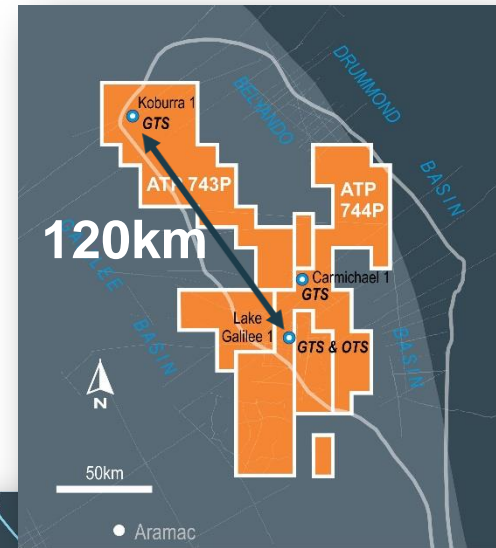
Galilee Basin – Sandstones



Comet Ridge Limited

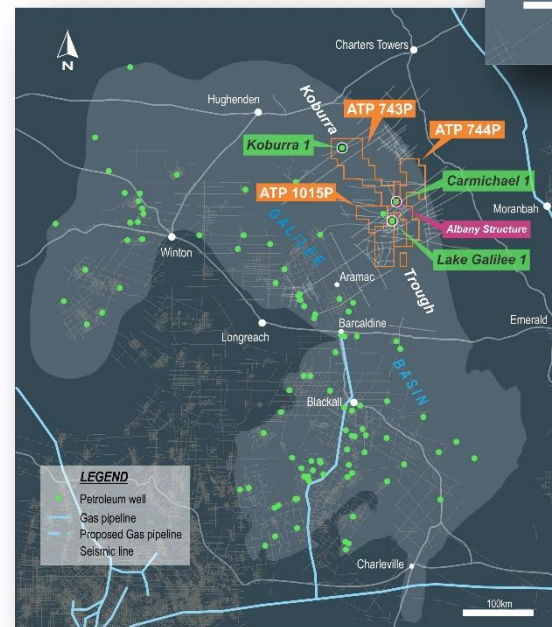
Koburra Trough

- 3 historic petroleum wells recovered oil gas & flowed gas from Lake Galilee Sandstone - all now in Comet Ridge acreage
- Koburra 1, Carmichael 1 and Lake Galilee 1 flowed gas to surface at low rates - active petroleum system
- However early basin wells were targeting oil and not designed to evaluate gas potential (high mud overbalance / not tested immediately on penetration etc.)



- Lake Galilee 1 – oil recovered
- Potential for significant gas volumes
- Targeting Late Carboniferous to Permian sandstones to depths of ~2800 metres
- Comet Ridge has Basin's first sandstone contingent resource

153PJ (2C)+ over Albany structure in Koburra Trough



- GTS – flowed gas to surface
- OTS – recovered oil to surface

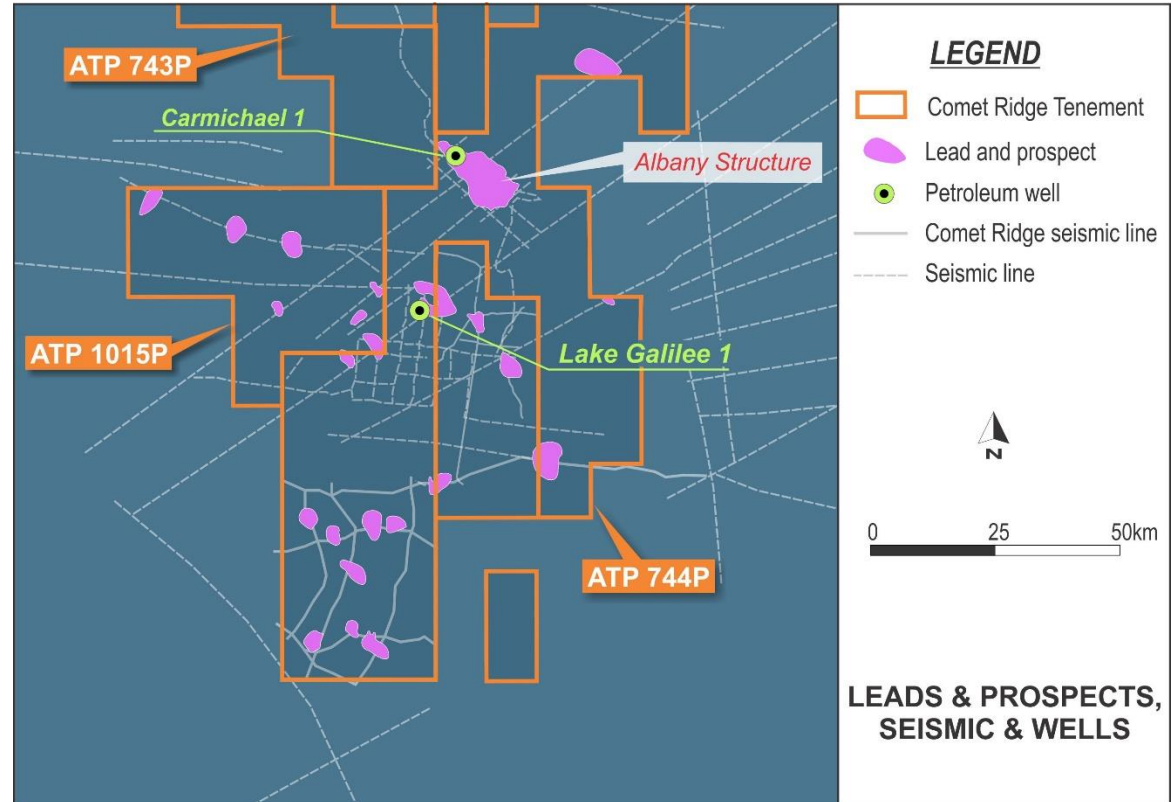
Galilee Basin – Sandstone Leads & Prospects



Comet Ridge Limited

Galilee Sandstone Targets

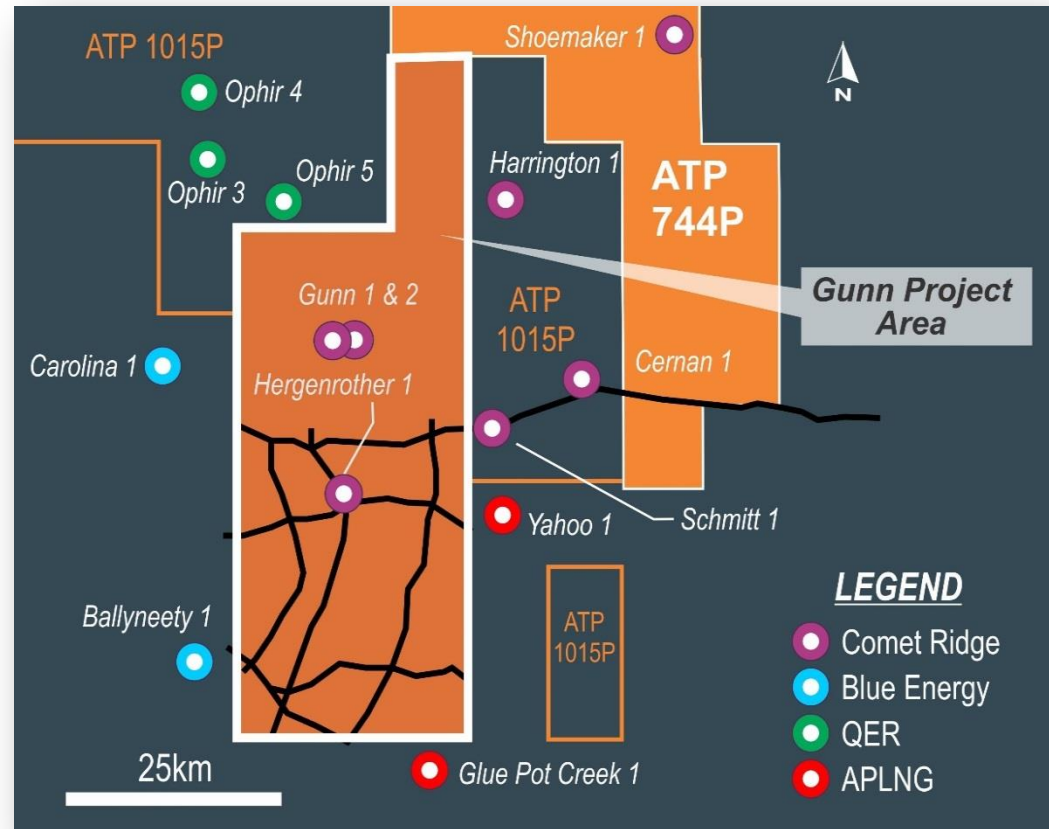
- Galilee Basin lightly explored
- Previous gas flows from oil exploration wells in this area
- Seismic data set is sparse
- No targets (yet) in areas of no seismic
- Albany has approx. 150m of gross sandstone with approx. 40m of net
- Successful gas flow in the first well could foreshadow wider success right across the eastern basin



Significant number of sandstone leads and prospects identified from relatively sparse seismic data set in the eastern Galilee

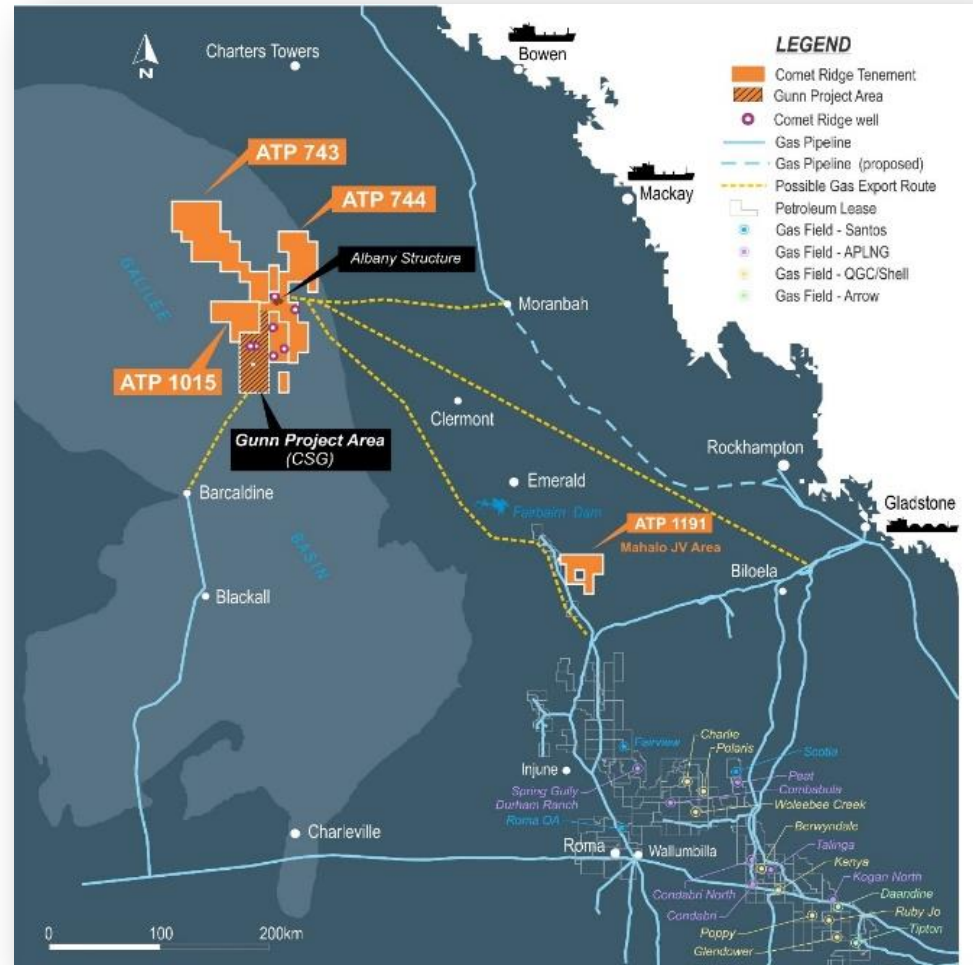
Gunn Project Area

- 6 individual coal seams
- depth to coal 700-1,000m
- >16m net coal deposited over large area
- average gas content 4.3 m³/t (high 7.3 m³/t)
- good to excellent permeability within target coals
- Gunn-2 Production Test
 - perforated single 4m coal interval
 - seam isolated above and below by impermeable mudstone
 - established connectivity to coals
 - evaluated methods of formation water treatment
 - demonstrated long term production solution



**Gunn Project area and ATP 1015 area
coals contain recoverable gas over an
estimated 1,865 km²**

- Comet Ridge Work Programme to be funded by gas pre-sale or equity farm-in (process underway)
- A structurally short east coast market is now looking to the Galilee Basin for gas volume
- Comet Ridge's eastern position with large gas resources will have increasing significance
- Sandstone Gas at Albany - logical first step due to size and position on the basin eastern edge
- Sandstone Gas at Lake Galilee structure - second step due to size and proximity to Albany (23km)
- CSG in the Gunn Project Area - third step due to the large volume and continuous nature of the coals
- Each of these three areas can be supported in the field as the one project with corresponding scale benefits



Comet Ridge - Summary

Mahalo

- ✓ Production enhancement at Mira completed
- ✓ Single step-out corehole completed
- ✓ Planning for horizontal well commenced
- ✓ Major reserves upgrade targeted this year

Galilee

- ✓ Well planning for drilling finalised
- ✓ Various pipeline options under consideration
- ✓ Funding options developed via pre-sale / farm-in
- ✓ Local market developing just east

Gunnedah

- ✓ Long-term follower strategy to Narrabri development





Comet Ridge Limited

Contact

Telephone: +61 7 3221 3661
Facsimile: +61 7 3221 3668
Email: info@cometridge.com.au

www.cometridge.com.au

Level 3
283 Elizabeth Street
Brisbane 4000

GPO Box 798
Brisbane 4001

ASX Listing Rule 5 Disclosure



Comet Ridge Limited

Competent Person Statement and ASX Listing Rules Chapter 5 - Reporting on Oil and Gas Activities

The Contingent Resource for the Albany Structure ATP 744 are taken from an independent report by Dr Bruce McConachie of SRK Consulting (Australasia) Pty Ltd, an independent petroleum reserve and resource evaluation company. The Contingent Resources information has been issued with the prior written consent of Dr McConachie in the form and context in which they appear in this Annual Reserves Statement for 2016. His qualifications and experience meet the requirements to act as a qualified petroleum reserves and resource evaluator as defined under the ASX Listing Rule 5.42 to report petroleum reserves in accordance with the Society of Petroleum Engineers ("SPE") 2007 Petroleum Resource Management System ("PRMS") Guidelines as well as the 2011 Guidelines for Application.

The estimate of Reserves and Contingent Resources for the Mahalo Project as part of ATP 1191P provided in this presentation, is based on, and fairly represents, information and supporting documentation determined by Mr Timothy L. Hower of MHA Petroleum Consultants LLC Inc in accordance with Petroleum Resource Management System guidelines. Mr Hower is a full-time employee of MHA, and is a qualified person as defined under the ASX Listing Rule 5.42. Mr Hower is a Licensed Professional Engineer in the States of Colorado and Wyoming as well as being a member of The Society of Petroleum Engineers. Mr Hower has consented to the publication of the Reserve and Contingent Resource estimates for Mahalo in the form and context in which they appear in this presentation.

The reserve and contingent gas resource estimates for ATP 1191P provided in this presentation were originally released to the Market in the Company's announcement of 28 August 2014 and subsequently updated in an announcement date 2 December 2015, and were estimated using the deterministic method with the estimate of contingent resources for ATP 337P not having been adjusted for commercial risk.

The contingent resource estimates for ATP 744P provided in this presentation are based on and fairly represent, information and supporting documentation determined by Mr John Hattner of Netherland, Sewell and Associates Inc, Dallas, Texas, USA, in accordance with Petroleum Resource Management System guidelines. Mr Hattner is a full-time employee of NSAI, and is considered to be a qualified person as defined under the ASX Listing Rule 5.42 and has given his consent to the use of the resource figures in the form and context in which they appear in this presentation.

The contingent gas resource estimates for ATP 744P provided in this statement were originally released to the Market in the Company's announcement of 25 November 2010, and were estimated using the deterministic method with the estimate of contingent resources for ATP 744P not having been adjusted for commercial risk.

COI confirms that it is not aware of any new information or data that materially affects the information included in any of the announcements relating to either AYP 1191P or ATP 744P referred to above and that all of the material assumptions and technical parameters underpinning the estimates in the announcements continue to apply and have not materially changed.

The contingent resource estimates for PEL 6, PEL 427 and PEL 428 referred to in this presentation were determined by Mr Timothy L. Hower of MHA Petroleum Consultants LLC in accordance with Petroleum Resource Management System guidelines. Mr Hower is a full-time employee of MHA, and is a qualified person as defined under the ASX Listing Rule 5.42. Mr Hower consented to the publication of the resource figures which appeared in the announcement of 7 March 2011 made by Eastern Star Gas Limited (ASX:ESG) and any reference and reliance on the resource figures for PEL 6, PEL 427 & PEL 428 in this presentation is only a restatement of the information contained in the ESG announcement.

The contingent resource estimates for PEL 6, PEL 427 and PEL 428 were estimated using the deterministic method with the estimate of contingent resources for PEL 6, PEL 427 and PEL 428 not having been adjusted for commercial risk.

COI confirms that it is not aware of any new information or data that materially affects the information included in the ESG announcement of 7 March 2011 and that all of the material assumptions and technical parameters underpinning the estimates in the announcements continue to apply and have not materially changed.