



4 June 2018

Comet Ridge Limited

Galilee Basin Drilling Update – Albany 1 Well

- **Well currently at 1888 metres and drilling ahead in 8-1/2” hole**
- **Total depth prognosed to be approximately 2775 metres**

Comet Ridge Limited (ASX:COI) is pleased provide an update on the drilling operations ongoing at the vertical Albany 1 conventional appraisal well in the north eastern Galilee Basin. At 0600 hrs this morning, the rig was drilling ahead at 1888 metres in the 8-1/2” intermediate hole section, part-way through the Jericho Formation.

The total depth (TD) of the well is prognosed to be approximately 2775 metres. Figure 1 below details the position of the Albany 1 well in the Galilee Basin and also the position of well on the structure (inset).

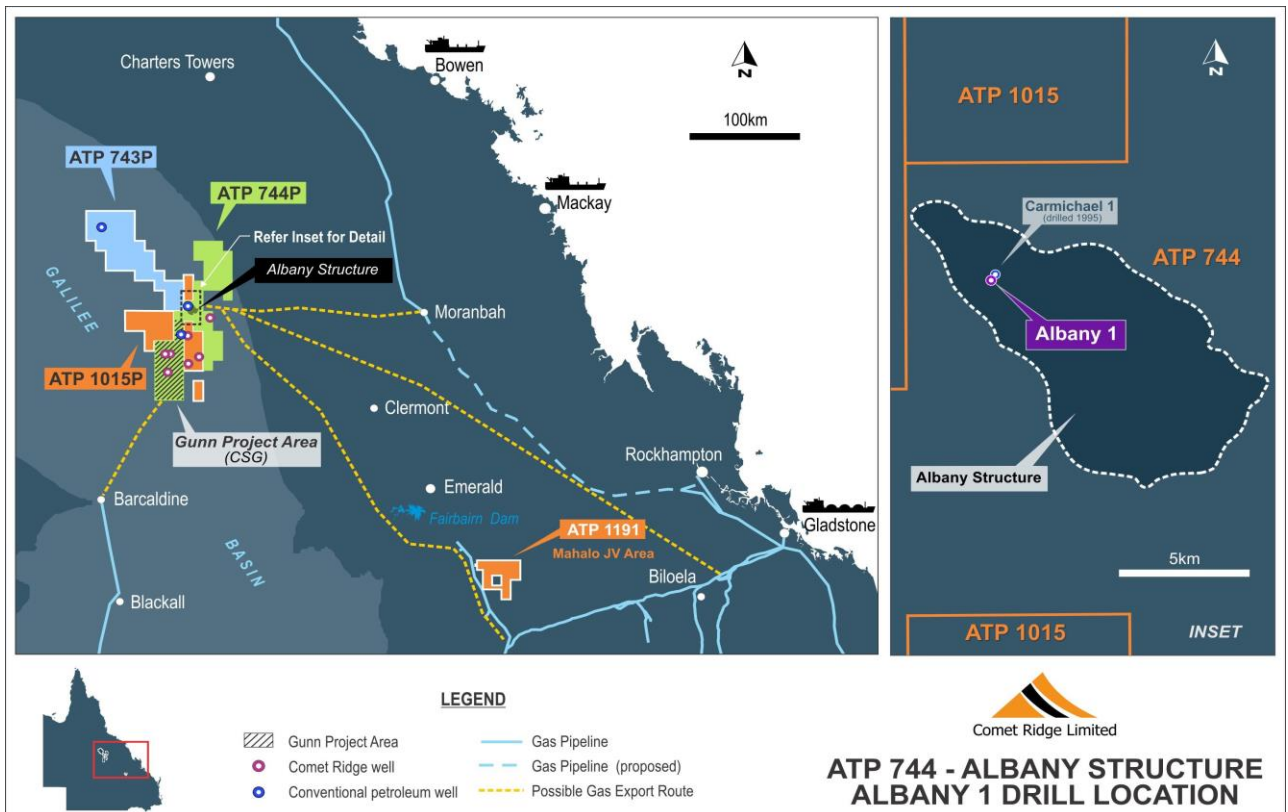


Figure 1 – Galilee Basin location and Albany structure (inset)

Comet Ridge Limited
 ABN 47 106 092 577

T: +61 7 3221 3661
 F: +61 7 3221 3668

E: comet@cometridge.com.au
 W: www.cometridge.com.au

283 Elizabeth St, Brisbane, Qld, 4000
 GPO Box 798, Brisbane, Qld, 4001



Stephen Rodgers
Company Secretary
Comet Ridge Limited

For further information please contact:
Tor McCaul
Managing Director
tor.mccaul@cometridge.com.au
+61 7 3221 3661

COMET RIDGE LIMITED – OVERVIEW

Comet Ridge Limited has a 40% interest in the Mahalo Coal Seam Gas (CSG) project located in ATP 1191 in Queensland's Bowen Basin. The Company is currently acting as agent for the Exploration Operator to manage work in the block. The Company also holds a 70% effective interest (consequent on the successful Farm-in of Vintage Energy Limited) in the Albany conventional gas project and 100% in the Gunn CSG project in the Galilee Basin (ATP 743, ATP 744 and ATP 1015). The Company also has CSG equity of 29.55%, 59.09% and 68.42% respectively in PEL 6, PEL 427 and PEL 428 in the Gunnedah Basin in New South Wales. Gas resources have been certified by independent professional certifiers at several projects, and gas reserves were certified in 2014 and expanded in 2015 and 2018 for the Mahalo project. The Company is listed on the Australian Securities Exchange (ASX Code: COI) and is based in Brisbane. The Board and Management are experienced in establishing and developing energy projects. Comet Ridge's early entry into well-located exploration areas, has allowed shareholders to gain substantial leverage into the considerable upside value potential associated with exploration success.



Comet Ridge Limited
ABN 47 106 092 577

T: +61 7 3221 3661
F: +61 7 3221 3668

E: comet@cometridge.com.au
W: www.cometridge.com.au

283 Elizabeth St, Brisbane, Qld, 4000
GPO Box 798, Brisbane, Qld, 4001